

# UltraLink Lite



## KVM access over IP

Low cost economy model

High-quality video up to 1280 x 1024 @ 75Hz

Very easy to install and operate

Secure encrypted operation

Scaling, scrolling, and auto-size features

Quad screen, real-time view of four computers

Compatible with most KVM switches

## Features and Benefits

- Local KVM port for configuring the UltraLink Lite and direct local access to the computer or KVM switch
- Connect to a remote computer, server, or KVM switch directly or over a network
- Resolution up to 1280 x 1024 @75Hz
- Solid-state embedded unit for maximum reliability
- Compatible with all Rose Electronics KVM products and most other KVM devices
- Easy to install and configure
- Scaling of computer images reduces the amount of data sent and permits fast screen updates over slow links (Modes: scaled, scrolled, or full-screen)
- Quad screen mode allows you to view four servers from one screen when connected to a KVM switch
- Password security prevents unauthorized configuration and access
- User ID and password required for remote access
- Remote client application is simple to install, use, and requires no licensing
- Front panel shows power and current connected input port (Network, serial, or local KVM)
- Flash memory technology allows for fast and reliability upgrades
- Free firmware upgrades for product enhancements and new Software features available at [www.rose.com](http://www.rose.com)
- Rackmount kits available in 19", 23", and 24" sizes
- Made in USA

## The UltraLink™ Lite Advantage . . .

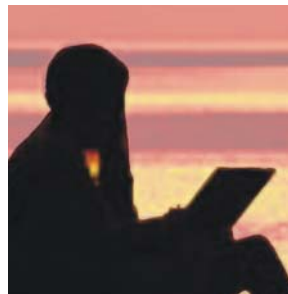
UltraLink Lite sets a new standard for an economical way to remotely manage server room environments. It allows you to access your computers and servers locally or across your network. Connect the unit to a Rose Electronics KVM switch and you now have access to as many as 1,000 computers or servers.

The UltraLink Lite is easy to install and configure. Connect the unit, assign an IP address, install the remote viewer software, and it's ready to use.

The sophisticated scaling feature allows you to position any size image of your server's video anywhere on your screen. With this feature, you can monitor servers while working on other tasks in another window.

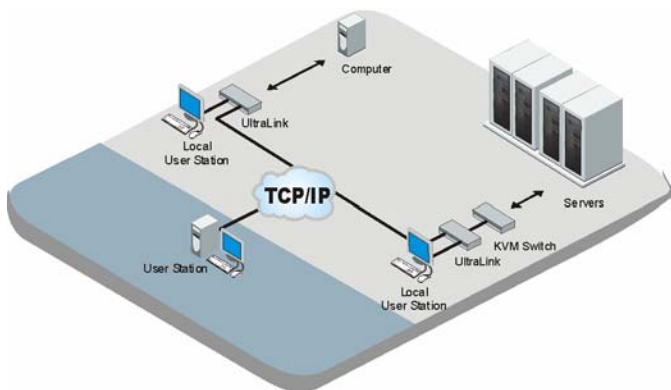
Network workstations can connect to multiple UltraLink Lites and display each connection in separate viewer windows.

The remote client viewer program is designed to simplify accessing the remote computers. Click on the connect icon, login, and you will see a crisp, clear high-quality image of the remote computer.



Maintain your systems from anywhere  
in the world

## Typical Application



**Introduction** The UltraLink Lite is a versatile and powerful product that extends the range of access to your computers and servers to anywhere in the world. Its advanced design makes it compatible with most KVM switches and computers.

**Installation** The UltraLink Lite is very easy to install and configure. Just connect the unit to your network, a local KVM station, and a computer or KVM switch. Next, assign an IP address to the unit and you're done. Next, run the remote client viewer program on a network workstation. Enter the assigned IP address and other configuration parameters, save it, and the workstation is ready to access the UltraLink Lite.

**Operation** All access to the UltraLink Lite is through the remote client viewer. Drop-down menus provide a selection list of multiple UltraLink locations that can be connected to. Once connected, you will see the computer's video and have complete control over that computer.

**Viewer windowing** The remote client viewer can be adjusted to any size. This feature allows you to place a scaled viewer's image in the corner of your screen and monitor a server while working on other tasks in another window or multiple viewer windows to monitor multiple remote locations.

**Security** The UltraLink Lite is designed with the highest regard for security. Remote access requires a user ID and password. All transmissions to and from the viewer and UltraLink Lite are encrypted with the latest SSL technology. Login, time-out, and lock out for repeated attempts to enter the password, add to the security of the system.

**Quad screen mode** With the UltraLink Lite connected to a KVM switch, you can view four servers at one time. The four connected servers are viewed in real time and are automatically scaled to fit their assigned quadrant in the viewer screen.

**Color modes and resolution** Full 16-bit color video is supported. You can view the video in black and white, gray scale, color, or use progressive color rendering.

**Mouse cursor** The UltraLink Lite uses a one-mouse cursor system in a very intuitive style to access the remote connection or an application on your desktop.

**Video resolution** Unlike other products, the UltraLink Lite automatically adjusts to the connected computers video. It supports a video resolution up to 1280 x 1024 which allows you to access the standard Sun computers resolutions.

**Flash memory** To support the latest devices and provide continuing features and support, UltraLink Lite contains flash memory. We provide free lifetime firmware upgrades from our web site at [www.rose.com](http://www.rose.com).

### Part Numbers

UL-LV3	Low-cost Single access unit
RM-UMnn	Rack mount kit for UL-LV3 (nn = 19", 23", or 24")
CAB-CXVSMM005 (provided)	5' UltraLink Lite to KVM switch cable
CAB-CX0606C005	5' UltraLink Lite to CPU cable (provided)

### Specifications

Dimensions	Model	Width	Depth	Height	Weight
	UL-LV3	8.90 22.6	8.40 21.3	1.75 in 4.40 cm	4.10 lbs 1.86 kg
Power	Auto Switching, 90 - 240 VAC, 130 watts				
Connectors	Power: IEC 320 standard receptacle Local KVM: Video - HD15F Keyboard - MD6F Mouse - MD6F Switch or computer : DB25F Ethernet port: RJ45 Serial port: DB9M				
Video bandwidth	150Mhz				
Chassis	Electro galvanized steel, black powder coated (top cover)				
Controls	Power On / Off Switch				
Indicators	LEDs: Power, Net, Serial, Local, Ethernet link, 10/100MB Ethernet speed				
Environmental	0° - 45°C / 32° - 113°F, 5 - 80% non-condensing RH				
Approvals	FCC, UL, cUL, TUV, CE, VCCI				



Rear View - UL-LV3 connectors

■ Phone: 281-933-7673 ■ E-mail: [sales@rose.com](mailto:sales@rose.com) ■

10707 Stancliff Rd. Houston, TX 77099

Rose Electronics – Europe: +49 (0)2454 969442 Rose Electronics – Asia: +65 6324 2322

DS-Ull-1.8

© Copyright 2004 Rose Electronics. All rights reserved



[WWW.ROSE.COM](http://WWW.ROSE.COM)