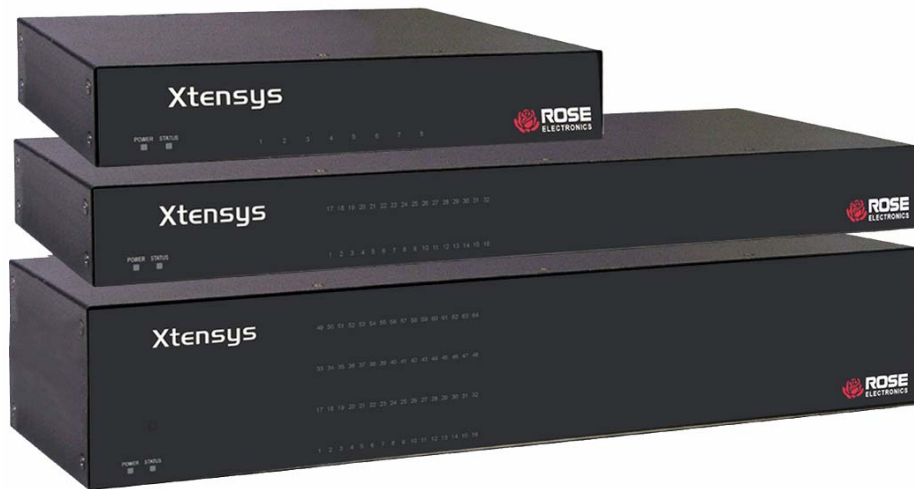


ROSE.COM

Quick Installation Guide



Instructions for using the Product Documents CD

Insert the provided CD into your CD reader. The selection program shown will start automatically.



- The manual provides a detailed overview, and the installation, and operation procedure.
- The Datasheet provides an overview and the specifications for the produce
- The Quick Start Guide can be used to quickly install the product.
- If the program does not self-start, open the CD and click on index.htm

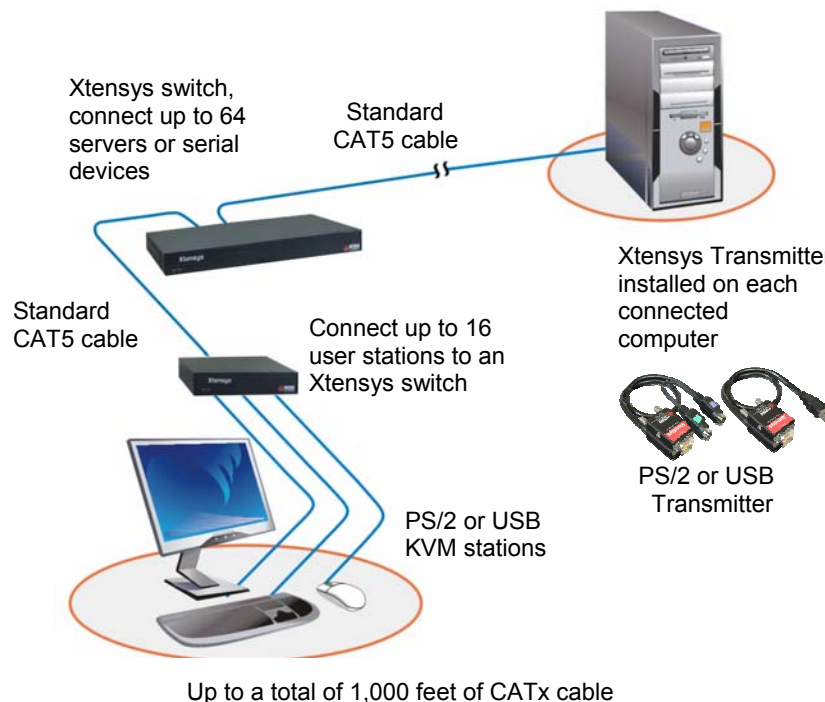
Click on the product document or use the convenient dropdown box to select a document. The selection will display the manual, datasheet, or Quick Start Guide. The manual, datasheet, and quick start guide are Acrobat PDF files.

The following guide will help you understand the basic single unit installation and operation procedures for the Xtensys system. The Xtensys system consists of the Xtensys switch and a remote user station for each remote user. The switch connects to your computers, servers, and serial devices, and to the remote user stations via CATx cabling. This greatly reduces cable bulk and cost. Connecting keyboards, monitors, and mice to the remote user stations requires no additional cables. These connect directly to the KVM User station ports on the user station.

Refer to the below connectivity diagram when installing your Xtensys system. An Xtensys 8 x 32 model is used in the below example. The basic installation is the same for all models, just more or less computer and user station connections.

To start the installation of the Xtensys system, it is recommended that all equipment (Xtensys switch, remote user stations, KVM monitors, serial devices, and any other device) be powered off.

If powering off your servers and equipment is not feasible, refer to the Xtensys installation and operations manual for the proper procedure to install the Xtensys system without removing power.



The multi-platform feature of Xtensys allows you to connect PCs/servers, UNIX, SUN, Mac, Linux, or other systems with no pre-configuration required. The PC port on Xtensys must be pre-configured only if a serial device is going to be connected to that port.

The first item to assess is the topology or layout of the Xtensys switch, the computers, serial devices, the remote user stations, and the CATx cable placement. Pre-planning of the layout of your switching system will make the installation process go more smoothly. Decide which PC/server or serial device will be connected to each Xtensys PC port (RJ45F rear connectors). Locate the Xtensys as close as possible to the computers and user stations so the cables are as short as possible but still give some freedom of movement. Provide proper strain relief for all cables.

Following is a step by step guide for installing and operating a single unit installation.

Step 1 – Connect the User Station(s)

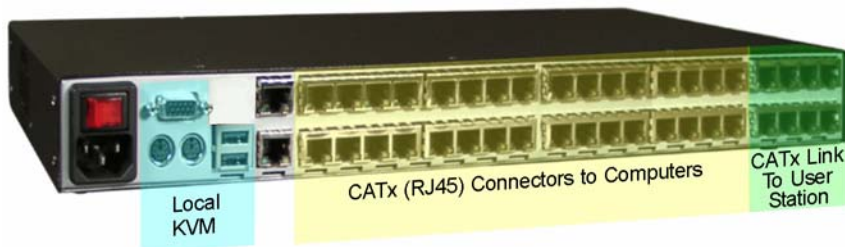


Connectors (left to right)

- (1) RJ45F – Link to Xtensys
 - (4) USB Type A (Optional)
 - (2) MiniDIN6F (keyboard/mouse)
 - (1) DB9M (serial device)
 - (1) HD15F (monitor)
 - (1) +5v input
(Internal 110/220V power supply optional)
- Audio feature options available

Depending on your model, up to 16 user stations can be connected to single Xtensys. To install the user stations, first connect a CATx cable from the RJ45F link connector to the one of the Xtensys RJ45F user ports. Next, connect your KVM station (keyboard, monitor, and mouse) to the user stations PS/2 or USB and HD15F connectors. A compatible serial device can connect to the DB9M connector. Refer to the users manual for user station connections for the 4, 8, or 12 CPU port models

Step 2 – Connect the computer(s)



Connectors (left to right)
for 8 x 32 model

- (1) IEC320 power
- (1) HD15F (monitor)
- (2) MiniDIN6
(keyboard/mouse)
- (2) USB Type A
- (2) RJ45F (Serial)
- (32) RJ45F (CATx to PCs)
- (8) RJ45F (CATx to user
stations)

The number of CATx connectors (RJ45) to the computers and User stations will vary depending on the model.

Depending on the Xtensys model, up to 64 computers, servers or serial devices can be connected to a single Xtensys unit. To connect the computers to the Xtensys switch, first connect an Xtensys PS/2 or USB CATx transmitter to the corresponding keyboard, monitor, and mouse ports on a computer. Next, connect a CATx cable from the CATx transmitters RJ45F connector to the RJ45F CPU port on the Xtensys rear panel that has been designated as the CPU port for the computer being connected. The remaining computers are connected using the same procedure, connect the transmitter to the computers keyboard, monitor, and mouse ports, and connect the CATx cable from the transmitter to the computer port on the Xtensys rear panel.

Step 3 – Connect the serial device(s)

Each CPU port on Xtensys can be configured for serial using the OSD menu system. When configured, connect a RJ45M to DB9F cable from the RJ45F CPU port on Xtensys to the DB9M serial port on a computer or serial device. Cable length restrictions apply for connecting serial devices.

Step 4 – Power on the system

It is recommended that the completed system be powered up in the following sequence:

1. Power on the KVM station 's monitor
 2. Power on all user stations
 3. Power on the Xtensys switch
 4. Apply power to the all Xtensys transmitters
 5. Boot all connected computers
-

Operating procedure

With all connections in place and the system powered up, you can connect and fully control all connected computers and serial peripherals as if you were directly connected to that piece of equipment. To switch the KVM user station to any connected computer, press and release the attention key (left Ctrl key), then enter the CPU port to switch to. If you need to perform maintenance on the computer connected to CPU port #12, the command to switch to this port would be: Press and release the left Ctrl key, then within 2 seconds, enter the CPU port (12) to switch to and press enter. Instantly the KVM station now has control of the computer or device connected to CPU port #12.

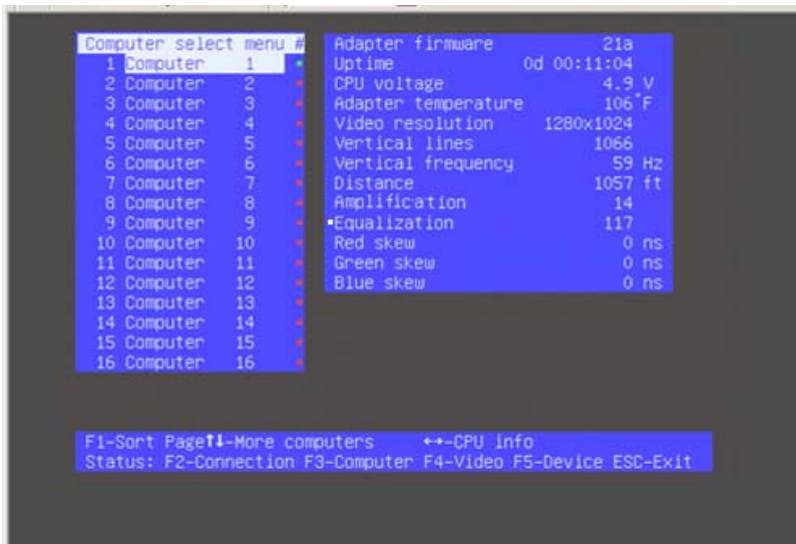
Below is a summary of the keyboard commands used by Xtensys. Ctrl Key Sequence is a press and release of the left control key. Enter the command following Ctrl within 2 seconds to initiate that command.

A complete explanation of each command and the use of the OSD with explanations and examples are covered in the users' manual.

Command	Key Sequence	Description
Main Menu	[Ctrl] [F12]	Displays main menu
CPU List	[Ctrl] [Esc]	Displays CPU selection list
Direct CPU connect	[Ctrl] n [Enter]	Connects directly to the specific CPU number "n".
Connect Back	[Ctrl] [Backspace]	Connects to the previous CPU
Connect Down	[Ctrl] [Minus sign]	Connects to the previous CPU in a Group.
Connect Up	[Ctrl] [Plus sign]	Connects to the next sequential CPU in a group
KVM Status	[Ctrl] D	Displays / Removes status box.
Logout	[Ctrl] L	Logs user out if the KVM station is configured for user logins.
Disconnect	[Ctrl] Q	Disconnects the current CPU
Reset Keyboard/ mouse	[Ctrl] R	Resets / enables keyboard and mouse; enables PS/2 mouse on connected CPU
Send Null Byte	[Ctrl] N	Sends a null byte to the CPU's PS/2 mouse port. Use this command if the PS/2 mouse gets "out of sync".
Reset Mouse (NT or Unix systems only)	[Ctrl] O (not zero)	Resets the currently selected NT or Unix computers PS/2 mouse. Also switches the NT mouse driver to "wheel" mode.
Start Scan	[Ctrl] S	Sequentially steps through all connected CPUs in a group.
Stop Scan	[Ctrl] X	Turns scan "Off"

Video Setting Keyboard Commands

Video gain, equalization, red skew, green skew, and blue skew can be adjusted if needed using simple keyboard commands. To adjust these components, first invoke the computer select OSD by pressing the left control key, then the escape key. Use the up or down arrow keys to select (highlight) the computer connection that needs adjusting, then press the right arrow key. The CPU information window shown below will display showing the present values for all settings.



To make any adjustments, first execute the below keyboard command for the adjustment needed, then use the keypad + and - key to increase or decrease the value

Adjustment	Keyboard Command
Amplification	a
Equalization	e
Red skew	r
Green skew	g
Blue skew	b

Make sure the computer select window is open and the CPU info window is displayed prior to issuing the commands.